

grippers

E Series

Parallel, Angular, Radial and 3 Jaw Grippers



numatics®

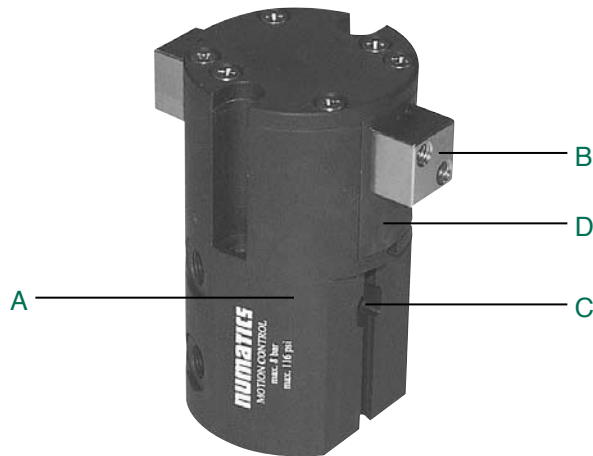
Euro-Series Parallel Robotic Gripper	3-13
Features and Benefits, EPG, ETG	3
Features and Benefits, ERG, EAG	4
How To Order	5
Dimensions	6-9
Technical Specifications	10-11
Switch Information	12-13



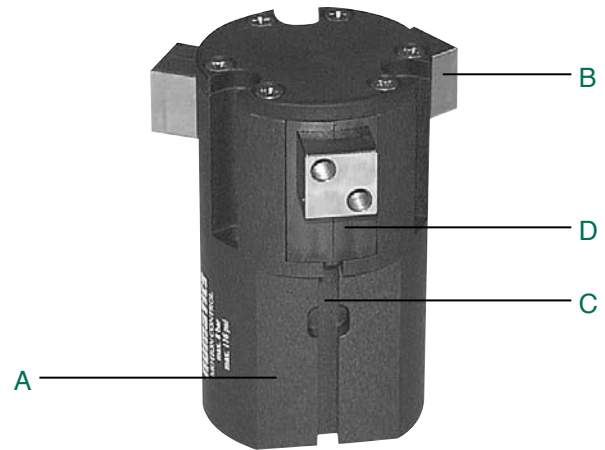
Euro-Series Parallel Robotic Gripper

Gripper Summary of Operation:

The “EPG” (two jaw) and “ETG” (three jaw) parallel gripper lines utilize a double acting piston and rocker arm design. The piston has a radial groove to which the rocker arm engages. As the piston moves up or down, the rocker arms pivot moving the gripper jaw open or closed. All jaw motions are synchronous.



EPG



ETG

A. Body

Hardcoat Anodized Teflon impregnated aluminum inside and out.
Round lightweight highly rigid design.
Flexible mounting options with dowel holes and locating boss standard.

B. Stainless steel alloy slides.

High resistance to corrosion.
No external arms, reduced pinch points, OSHA recognized.

C. Dual position sensor mounting tracks and magnetic piston standard on all models.

Easy access, total adjustability, factory or field installed.
Hall effect (NPN, PNP) and AC/DC reed switches.

D. A Polyoxymethylene (POM), or acetal polymer bearing surface, reinforced by MoS2, standard on all models.

High Resistance to harsh chemicals.
Isolates internal parts from environmental contamination.
Superior Slide Support.



Euro-Series Parallel Robotic Gripper

NUMATICS®

Euro-Series Radial & Angular Robotic Gripper

Gripper Summary of Operation:

Radial “ERG”

The piston rod has multiple gear teeth machined on one end. Each jaw has a pinion gear arrangement which engages the piston rack. As the piston moves up and down, the pinion arrangement rotates the radial jaws open and closed.

Angular “EAG”

Like the parallel grippers, the double acting piston has a radial groove to which the same rocker arm engages. As the piston moves up and down, the rocker pivots moving the gripper jaws in an angular motion open and close.



ERG



EAG

A. Body

Hardcoat Anodized Teflon impregnated aluminum inside and out.
Round lightweight highly rigid design.
Flexible mounting options with dowel holes and locating boss standard.

B. Jaws

Hardcoat Anodized Teflon impregnated aluminum
Lightweight, Durable, high strength
Each jaw travels 2 degrees beyond center.

C. Dual position sensor mounting tracks and magnetic piston standard on all models.

Easy access, total adjustability, factory or field installed.
Hall effect (NPN, PNP) and AC/DC reed switches.

D. A Polyoxymethylene (POM), or acetal polymer bearing surface, reinforced by MoS₂. standard on all models.

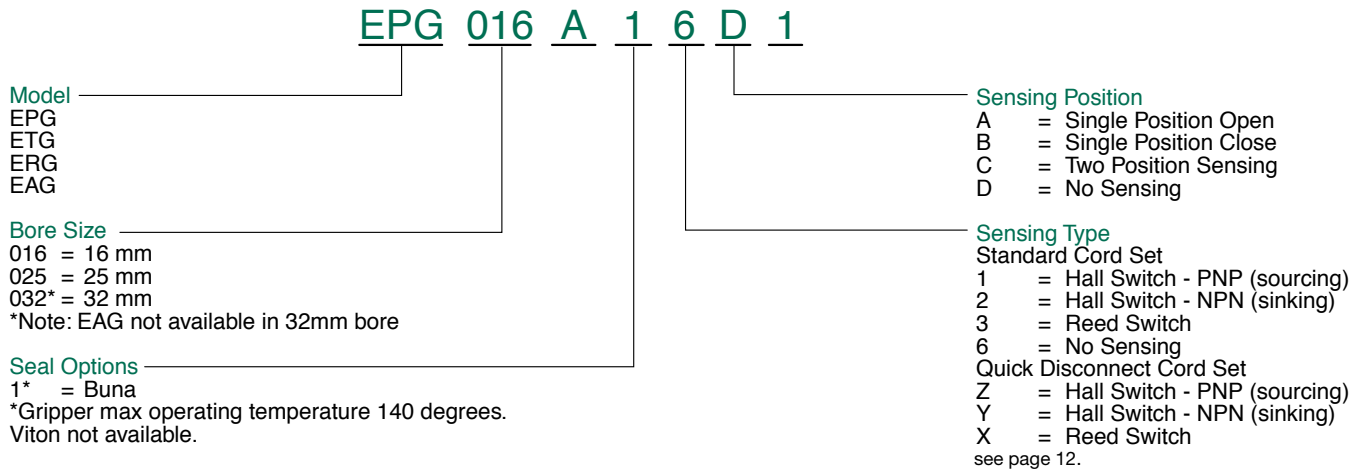
High Resistance to harsh chemicals.
Isolates internal parts from environmental contamination.
Superior jaw support.

E. Steel alloy pivot pins

Reduced friction, low wear, increased service life.



How to Order



Example order:

Part Number: EPG016A16D1*
Part Description: 2 jaw parallel with 16 mm bore, standard buna seals no sensing.

*When entering an order, DO NOT use spaces or dashes. Follow example above.

When ordering additional seal kits:

SEAL KIT SERIES	BUNA SEAL KIT
All 16mm Bore Models	ESKB-016
All 25mm Bore Models	ESKB-025
All 32mm Bore Models	ESKB-032

When ordering additional switches:

Sensing Kits

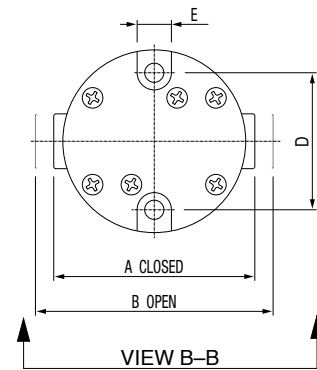
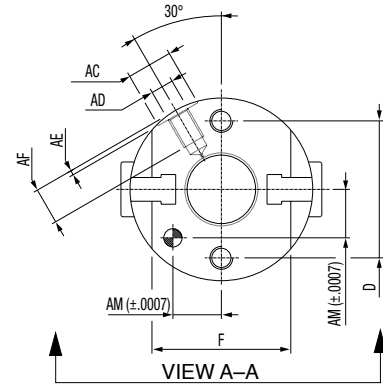
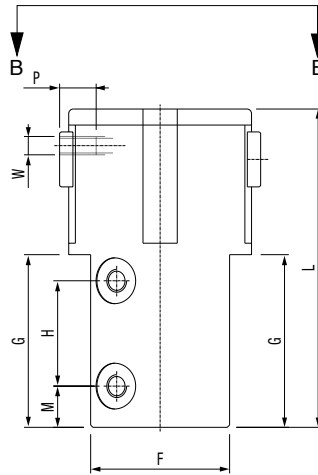
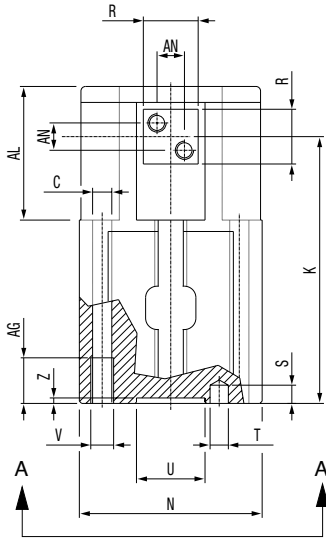
STANDARD CORD SET SWITCH		PART NO.
Hall Effect-PNP (Sourcing)		HPNPS31
Hall Effect-NPN (Sinking)		HNPNS32
Reed Switch		RSS02
QUICK DISCONNECT CORD SET		PART NO.
Hall Effect-PNP (Sourcing)		HPNPQ31
Hall Effect-NPN (Sinking)		HNPNQ32
Reed Switch		RSQ02
90° 5 meter cable		PXC90
Straight 5 meter cable		PXCST



Euro-Series Parallel Robotic Gripper

NUMATICS®

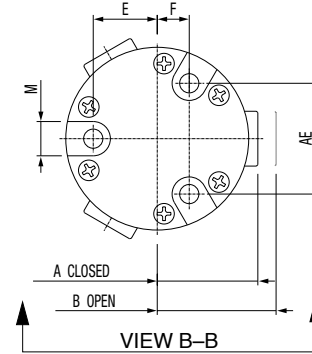
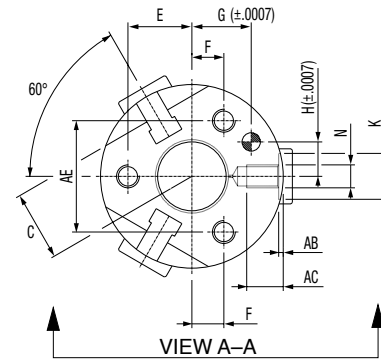
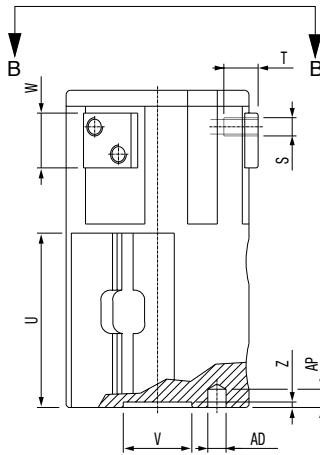
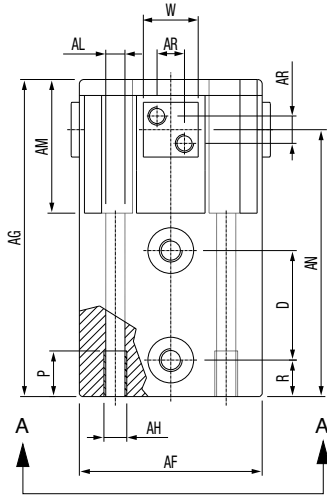
EPG Series



	EPG016		EPG025		EPG032	
	Inches	mm	Inches	mm	Inches	mm
A	1.7	44.0	2.1	55.0	2.6	66.0
B	2.0	52.0	2.6	68.0	3.3	84.0
C	0.157	4.0	0.196	5.0	0.26	6.8
D	1.18	30.0	1.59	40.5	1.88	48.0
E	0.29	7.5	0.37	9.5	0.43	11.0
F	1.19	30.4	1.67	42.6	1.85	47.0
G	1.48	37.7	1.88	48.0	2.14	54.5
H	0.90	23.0	1.18	30.0	1.14	29.0
K	2.30	58.5	2.93	74.5	3.40	86.5
L	2.73	69.5	3.46	88.0	4.05	103.0
M	0.35	9.0	0.51	13.0	0.70	18.0
N	1.57	40.0	1.96	50.0	2.36	60.0
P	0.23	6.0	0.31	8.0	0.39	10.0
R	0.47	12.0	0.59	15.0	0.70	18.0
S	0.157	4.0	0.23	6.0	0.31	8.0
T	M4	M4	M5	M5	M6	M6
U	0.59	15.0	0.78	20.0	0.09	25.0
V	10-32	M5	M6	M6	M8	M8
W	M4	M4	10-32	M5	M6	M6
Z	0.04	1.2	0.07	1.8	0.09	2.5
AC	0.39	10.0	0.39	10.0	0.62	16.0
AD	10-32	M5	10-32	M5	1/8 NPTF	1/8 NPTF
AE	0.03	1.0	0.03	1.0	0.05	1.5
AF	0.31	8.0	0.31	8.0	0.37	9.5
AG	0.39	10.0	0.47	12.0	0.59	15.0
AL	1.15	29.3	1.42	36.2	1.75	44.5
AM	0.41	10.6	0.56	14.3	0.66	17.0
AN	0.23	6.0	0.29	7.5	0.35	9.0



ETG Series



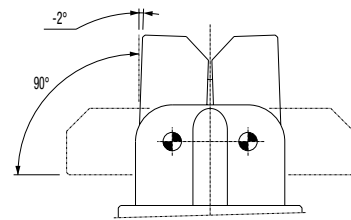
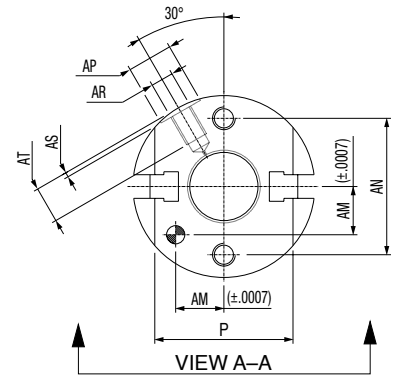
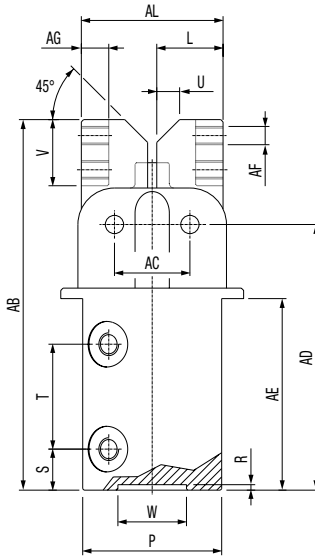
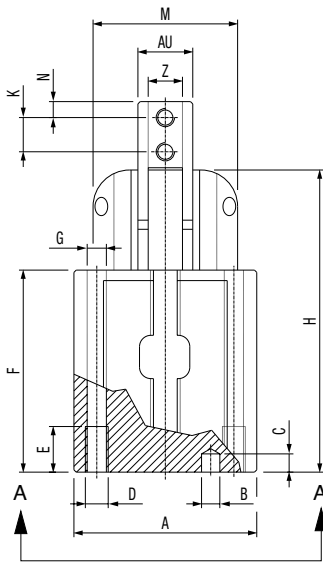
	ETG016		ETG025		ETG032	
	Inches	mm	Inches	mm	Inches	mm
A	0.86	22.0	1.08	27.5	1.29	33.0
B	1.02	26.0	1.33	34.0	1.65	42.0
C	0.59	15.2	0.83	21.3	0.92	23.5
D	0.90	23.0	1.18	30.0	1.14	29.0
E	0.55	14.0	0.79	20.2	0.94	24.0
F	0.27	7.0	0.39	10.1	0.47	12.0
G	0.51	13.0	0.66	17.0	0.80	20.5
H	0.29	7.5	0.39	10.0	0.49	12.5
K	0.39	10.0	0.39	10.0	0.62	16.0
M	0.29	7.5	0.37	9.5	0.43	11.0
N	10-32	M5	10-32	M5	1/8 NPTF	1/8 NPTF
P	0.39	10.0	0.47	12.0	0.59	15.0
R	0.35	9.0	0.51	13.0	0.70	18.0
S	M4	M4	10-32	M5	M6	M6
T	0.23	6.0	0.31	8.0	0.39	10.0
U	1.48	37.7	1.88	48.0	2.14	54.5
V	0.59	15.0	0.78	20.0	0.98	25.0
W	0.47	12.0	0.59	15.0	0.70	18.0
Z	0.04	1.2	0.07	1.8	0.09	2.5
AB	0.03	1.0	0.03	1.0	0.06	1.5
AC	0.31	8.0	0.31	8.0	0.37	9.5
AD	M4	M4	M5	M5	M6	M6
AE	0.95	24.2	1.37	35.0	1.63	41.5
AF	1.57	40.0	1.96	50.0	2.36	60.0
AG	2.73	69.5	3.46	88.0	4.05	103.0
AH	10-32	M5	M6	M6	M8	M8
AL	0.16	4.2	0.12	5.2	0.26	6.8
AM	1.15	29.3	1.42	36.2	1.75	44.5
AN	2.30	58.5	2.93	74.5	3.40	86.5
AP	0.15	4.0	0.23	6.0	0.31	8.0
AR	0.23	6.0	0.29	7.5	0.35	9.0



Euro-Series Parallel Robotic Gripper

NUMATICS®

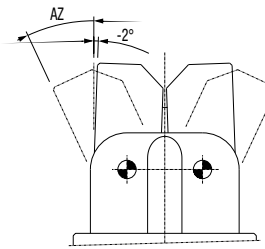
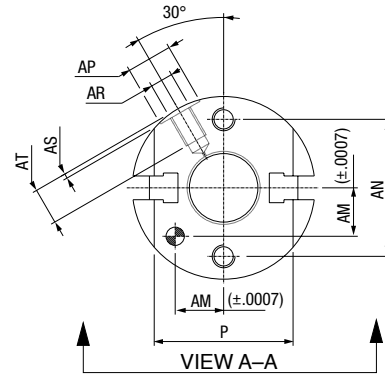
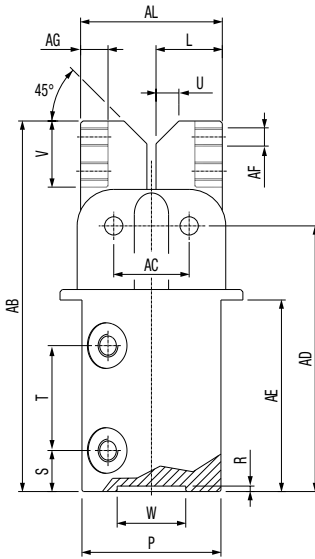
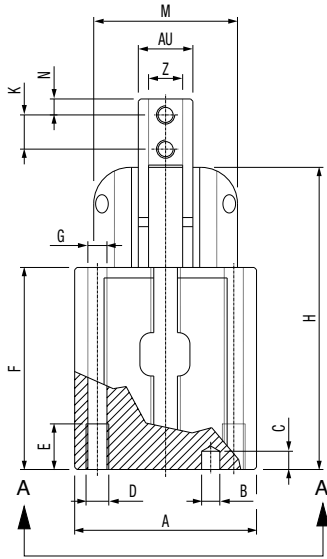
ERG Series



	ERG016		ERG025		ERG032	
	Inches	mm	Inches	mm	Inches	mm
A	1.57	40.0	1.96	50.0	2.36	60.0
B	M4	M4	M5	M5	M6	M6
C	0.15	4.0	0.23	6.0	0.31	8.0
D	M5	M5	M6	M6	M8	M8
E	0.39	10.0	0.47	12.0	0.59	15.0
F	1.74	44.3	2.34	59.5	2.65	67.4
G	0.15	4.2	0.19	5.2	0.27	6.8
H	2.60	66.25	3.66	93.0	4.24	107.9
K	0.29	7.55	0.39	10.0	0.51	13.0
L	0.57	14.5	0.82	21.0	1.06	27.0
M	1.27	32.5	1.73	44.0	2.12	54.0
N	0.13	3.5	0.19	5.0	0.23	6.0
P	1.19	30.4	1.67	42.6	1.85	47.0
R	0.04	1.2	0.07	1.8	0.09	2.5
S	0.35	9.0	0.51	13.0	0.70	18.0
T	0.90	23.0	1.18	30.0	1.14	29.0
U	0.19X45°	5X45°	0.31X45°	8X45°	0.43X45°	11X45°
V	0.57	14.5	0.78	20.0	0.98	25.0
W	0.59	15.0	0.78	20.0	0.98	25.0
Z	0.29	7.5	0.45	11.5	0.55	14.0
AB	3.19	81.25	4.48	114.0	5.29	134.4
AC	0.64	16.5	0.90	23.0	1.14	29.0
AD	2.29	58.25	3.14	81.0	3.67	93.4
AE	1.65	42.0	2.24	57.0	2.51	64.0
AF	M4	M4	10-32	M5	M6	M6
AG	0.23	6.0	0.33	8.5	0.43	11.0
AL	1.22	31.0	1.73	44.0	2.20	56.0
AM	0.41	10.6	0.56	14.3	0.66	17.0
AN	1.18	30.0	1.59	40.5	1.88	48.0
AP	0.39	10.0	0.39	10.0	0.62	16.0
AR	10-32	M5	10-32	M5	1/8 NPTF	1/8 NPTF
AS	0.03	1.0	0.03	1.0	0.05	1.5
AT	0.31	8.0	0.31	8.0	0.37	9.5
AU	0.47	12.0	0.70	18.0	0.90	23.0



EAG Series



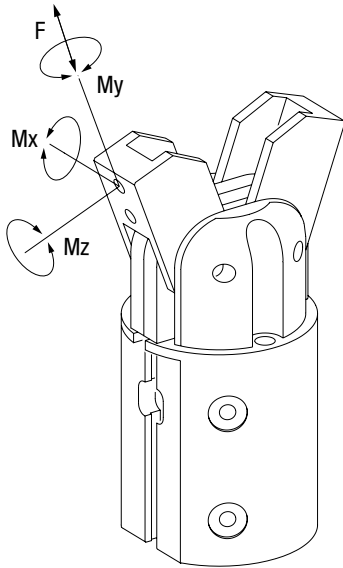
	EAG016		EAG025	
	Inches	mm	Inches	mm
A	1.57	40.0	1.96	50.0
B	0.15	4.0	0.19	5.0
C	0.15	4.0	0.23	6.0
D	M5	M5	M6	M6
E	0.39	10.0	0.47	12.0
F	1.74	44.3	2.34	59.5
G	0.15	4.2	0.19	5.2
H	2.60	66.25	3.66	93.0
K	0.29	7.55	0.39	10.0
L	0.57	14.5	0.82	21.0
M	1.27	32.5	1.73	44.0
N	0.13	3.5	0.19	5.0
P	1.19	30.4	1.67	42.6
R	0.04	1.2	0.07	1.8
S	0.35	9.0	0.51	13.0
T	0.90	23.0	1.18	30.0
U	0.19X45°	5X45°	0.31X45°	8X45°
V	0.57	14.5	0.78	20.0
W	0.59	15.0	0.78	20.0
Z	0.29	7.5	0.45	11.5
AB	3.19	81.25	4.48	114.0
AC	0.64	16.5	0.90	23.0
AD	2.29	58.25	3.14	81.0
AE	1.65	42.0	2.24	57.0
AF	M4	M4	10-32	M5
AG	0.23	6.0	0.33	8.5
AL	1.22	31.0	1.73	44.0
AM	0.41	10.6	0.56	14.3
AN	1.18	30.0	1.59	40.5
AP	0.39	10.0	0.39	10.0
AR	10-32	M5	10-32	M5
AS	0.03	1.0	0.03	1.0
AT	0.31	8.0	0.31	8.0
AU	0.47	12.0	0.70	18.0
AZ	19°	19°	20°	20°



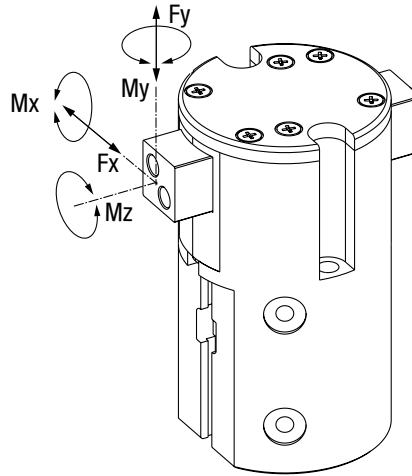
Euro-Series Parallel Robotic Gripper

numatics®

Typical For
EAG & ERG



Typical For
ETG & EPG



	EAG016 ERG016	EAG025 ERG025	ERG032		EPG016 ETG016	EPG025 ETG025	EPG032 ETG032
F	6 lbs.	15 lbs.	29lbs	Fx	11 lbs.	22 lbs.	33 lbs.
Mx	10 in. lbs.	32 in. lbs.	73 in. lbs.	Fy	11 lbs.	22 lbs.	33 lbs.
My	11 in. lbs.	43 in. lbs.	97 in. lbs.	Mx	17 in. lbs.	54 in. lbs.	107 in. lbs.
Mz	10 in. lbs.	36 in. lbs.	81 in. lbs.	My	15 in. lbs.	45 in. lbs.	89 in. lbs.
				Mz	15 in. lbs.	45 in. lbs.	89 in. lbs.

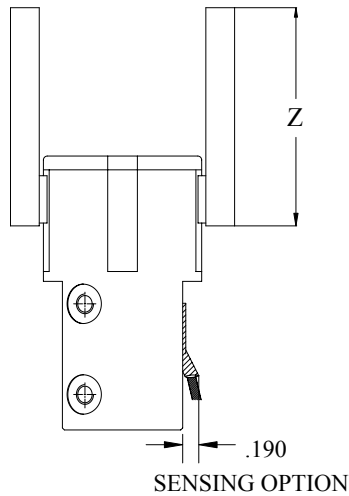
Forces @ 100 psi

	EPG016	EPG025	EPG032	ETG016	ETG025	ETG032
Force-open lbs.	31.0	57.0	93.0	31.0	57.0	93.0
Force-closed lbs.	27.0	51.0	83.0	27.0	51.0	83.0
Total Stroke in. (mm)	0.314 (8.0)	0.511 (13.0)	0.708 (18.0)	0.320 (8.0)	0.546 (14.0)	0.720 (18.2)
Weight lbs.	0.44	0.90	1.43	0.46	0.94	1.49
Displacement in3	0.183072	0.793312	1.586624	0.183072	0.793312	1.586624
Max Pressure psi	116.0	116.0	116.0	116.0	116.0	116.0

	ERG016	ERG025	ERG032	EAG016	EAG025
Force-open lbs.	31.0	57.0	93.0	31.0	57.0
Force-closed lbs.	27.0	51.0	83.0	27.0	51.0
Total Stroke Deg.	184 deg.	184 deg.	184 deg.	42 deg.	44 deg.
Weight lbs.	0.35	0.81	1.3	0.33	0.79
Displacement in3	0.183072	0.793312	1.586624	0.183072	0.793312
Max Pressure psi	116.0	116.0	116.0	116.0	116.0

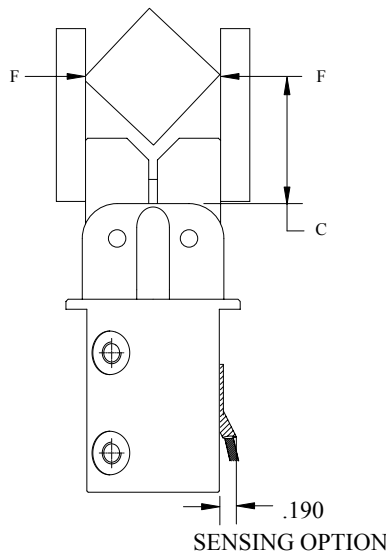


Grip Force VS. Finger Length



Grip force in pounds @ 100 psi

Z	EPG016	EPG025	EPG032	ETG016	ETG025	ETG032
1inch	18	48	72	18	48	72
2 inches	10	40	64	10	40	64
3 inches	3	30	60	3	30	60



	Grip Force (lbs.)		Grip Force (Newtons)	
ERG016 EAG016	$F = \frac{(0.27) \times (P)}{(C+.315)}$	P=psi C=in.	$F = \frac{(442.44) \times (P)}{(C+8.001)}$	P=Bars C=mm
ERG025 EAG025	$F = \frac{(0.51) \times (P)}{(C+.472)}$	P=psi C=in.	$F = \frac{(835.73) \times (P)}{(C+11.988)}$	P=Bars C=mm
ERG032	$F = \frac{(0.83) \times (P)}{(C+.570)}$	P=psi C=in.	$F = \frac{(1360.12) \times (P)}{(C+14.478)}$	P=Bars C=mm



Euro-Series Parallel Robotic Gripper

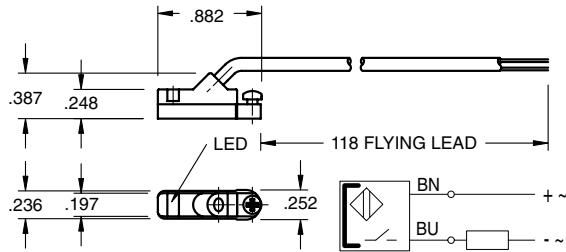
NUMATICS®

E Series Switch Information

SWITCH OR BRACKET DESCRIPTION	STANDARD PART NO.	QUICK DISCONNECT PART NO.
1 Hall Effect - PNP (Sourcing)	HPNPS31	HPNPQ31
1 Hall Effect - NPN (Sinking)	HNPNS32	HNPNQ32
1 Reed Switch	RSS02	RSQ02



RSS02 – Reed Switch (AC/DC NO), flying lead



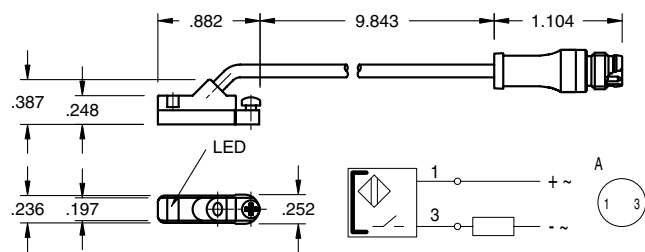
Sensing Data

Ambient temperature range T_a	(°F/°C)	-4 to 176 (-20 to 80)
Frequency of operating cycles f at U_e	(kHz)	0.5
Turn on time t	(ms)	≤ 0.25
turn off time t	(ms)	0.03
LED function indication		yes

Electrical Data

Rated operational voltage U_e	(V)	3...130 AC/DC
Supply voltage U_B	(V)	3...130 AC/DC
Voltage drop U_d at I_e Stat./dyn.	(V)	3.5
Rated insulation voltage U_i	(V)	2750 DC (EN 60335-1)
Rated supply frequency	(Hz)	AC/DC
Rated operational current I_e	(mA)	50 (10W max.)
No-load supply current I_o at U_e d./und.	(mA)	0
Observe polarity for correct LED function		

RSQ02 – 8mm connector

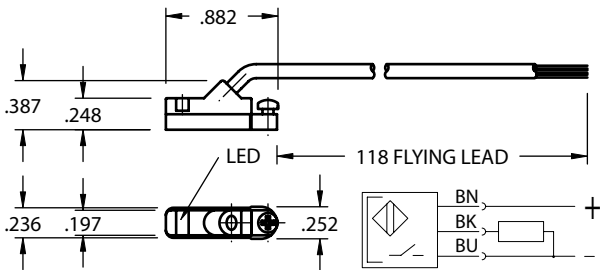


Mechanical Data

Housing material	Polyamide
Material of sensing face	Polyamide
Connection	PVC cable
Degree of Protection	IP 67
Rated shock: half-sinus, 50g, 11 ms	
Rated vibration environment: 10g, 10...2000 Hz, 90 min	



HPNPS31 – Electronic Switch (PNP NO), flying lead



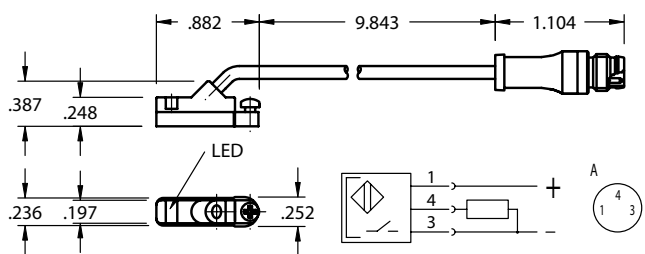
Sensing Data

Ambient temperature range Δ	(°F/°C)	-13 to +158 (-25 to +70)
Temperature drift	(% of)	$\leq 0.3\%/^{\circ}\text{C}$
Frequency of operating cycles f at U_e	(kHz)	10
Turn on time t	(ms)	.05
turn off time t	(ms)	.05
Utilization categories		DC13
Function-/supply voltage indication		YES

Electrical Data

Rated operational voltage U_e	(V)	24 DC
Supply voltage U_B	(V)	10...30 DC
incl. ripple	(% of U_e)	15
Voltage drop U_d at I_e Stat./dyn.	(V)	1/-
Rated insulation voltage U_i	(V)	75 AC
Rated supply frequency	(Hz)	DC
Rated operational current I_e	(mA)	200
No-load supply current I_o at U_e d./und.	(mA)	25/13
Protected against polarity reversal		YES

HPNPQ31 – 8mm connector



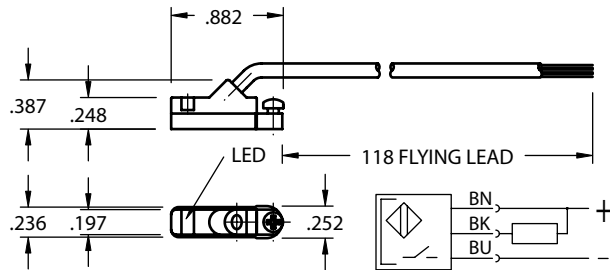
Mechanical Data

Housing material	Polyamide
Material of sensing face	Polyamide
Connection	PVC cable
Degree of Protection	IP 67
Rated shock: half-sinus, 30 g, 11 ms	
Rated vibration environment: 55 Hz, 1mm amplitude, 3 x 30	





HNPNS32 – Electronic Switch (NPN NO), flying lead



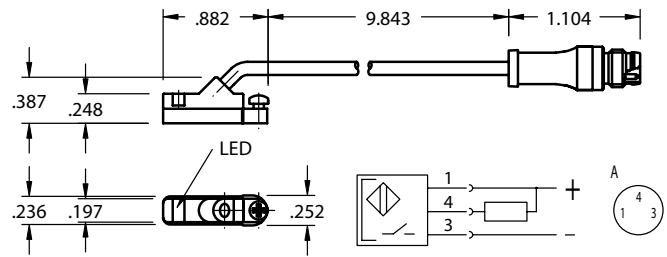
Sensing Data

Ambient temperature range t_d	(°F/°C)	-13 to +158 (-25 to +70)
Temperature drift	(% of S_T)	$\leq 0.3\%/^{\circ}\text{C}$
Frequency of operating cycles f at U_e	(kHz)	10
Turn on time t	(ms)	.05
turn off time t	(ms)	.05
Utilization categories		DC13
Function—supply voltage indication		YES

Electrical Data

Rated operational voltage U_e	(V)	24 DC
Supply voltage U_B	(V)	10...30 DC
incl. ripple	(% of U_e)	15
Voltage drop U_d at I_e Stat./dyn.	(V)	1/-
Rated insulation volatage U_i	(V)	75 AC
Rated supply frequency	(Hz)	DC
Rated operational current I_e	(mA)	200
No-load supply current I_o at U_e d./und.	(mA)	25/13
Protected against polarity reversal		YES

HNPNQ32 – 8mm connector



Mechanical Data

Housing material	Polyamide
Material of sensing face	Polyamide
Connection	PVC cable
Degree of Protection	IP 67
Rated shock: half-sinus, 30 g, 11 ms	
Rated vibration environment: 55 Hz, 1mm amplitude, 3 x 30	

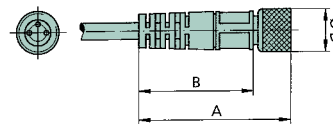


Female Connectors for Reed Switches and Hall Effect Sensors

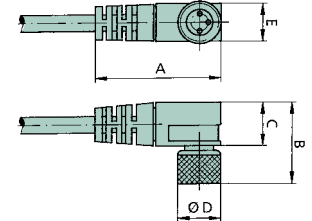
Dimensions (mm)

TYPE	ORDER CODE
Straight, 5 m Cable	PXCST
Elbow, 5 m Calbe	PXC90

Straight Type

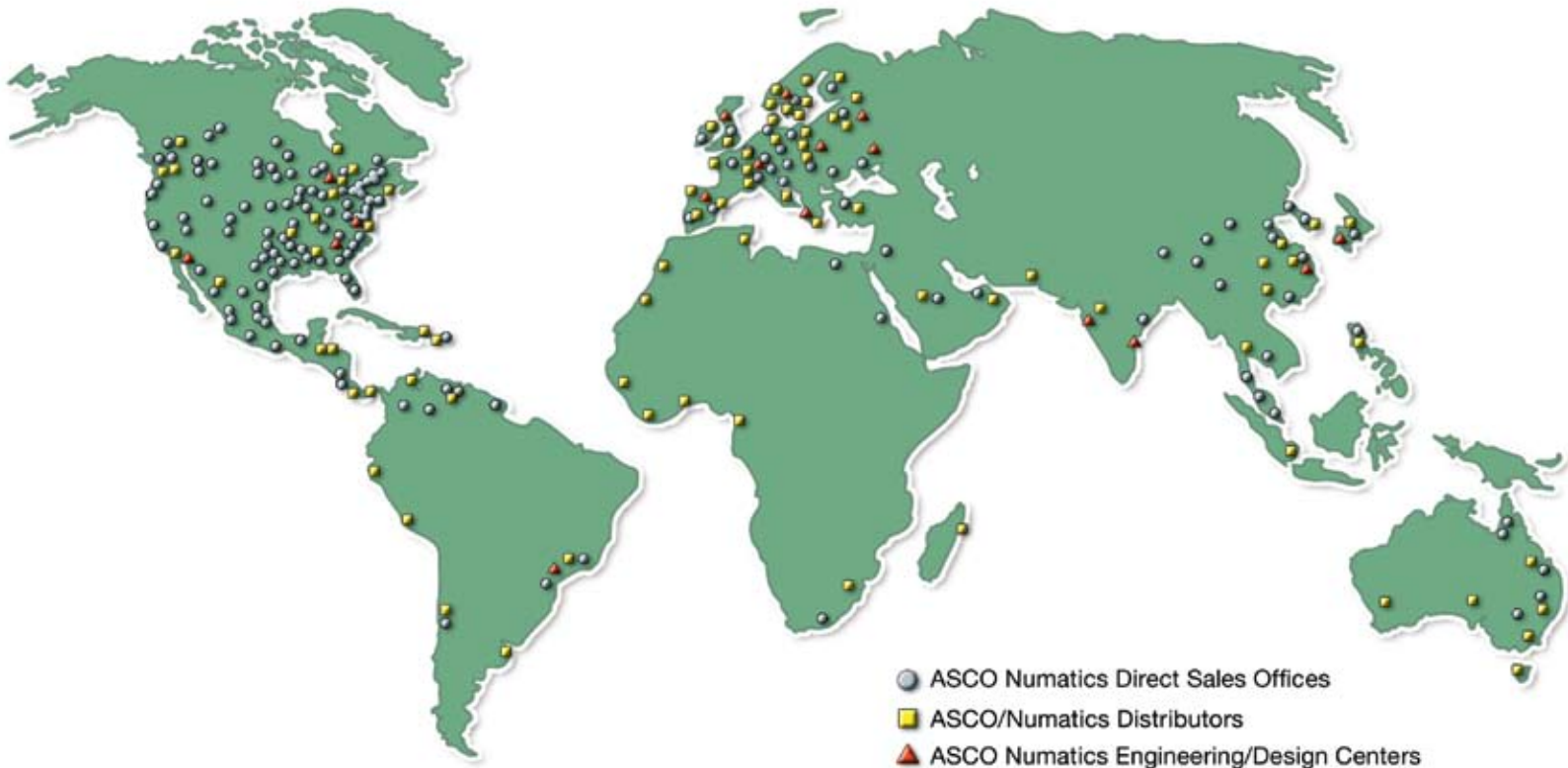


Elbow Type



NUMATICS

*World Class Supplier
of Pneumatic Components*



WORLD HEADQUARTERS

USA

Numatics, Incorporated

46280 Dylan Drive
Novi, Michigan 48377

P: 1-888-Numatics
1-888-686-2842

Canada

Numatics, Ltd

P: 519-452-1777

Mexico

Numatics de Mexico S.A. de C.V.

P: 52-222-284-6176

For a comprehensive listing of all Numatics production and distribution facilities worldwide, visit:

www.numatics.com