

numatics®

STAINLESS STEEL

HAZ. LOC. & INT. SAFE

1/4 AND 3/8 NPTF, STAINLESS STEEL, MULTI-PURPOSE, LINE MOUNTED 4-WAY SOLENOID-PILOT ACTUATED VALVES

S2 - SERIES

The new Numatics stainless steel S2-Series valves (316 type), features both hazardous location and intrinsically safe solenoids. Valves may be mounted in any position.

All valves are approved for use in the following atmospheres:

CLASS I: Groups C and D
CLASS II: Groups E, F and G

APPROVALS:

Hazardous Location
U.L. File E37780
CSA File LR 26894-14
Intrinsically Safe
CSA - File LR 42844-11
FM - J.I. 2T7A3.AX

OPERATING DATA

PRESSURE RANGE:

Internal Pilot Supply: 14.5 PSIG - 120 PSIG

External Pilot Supply:

Main Valve: 28" Hg. vacuum to 145 PSIG

Pilot Supply: Same as internal pilot supply

TEMPERATURE RANGE: -40° F to +160° F ambient.

BODY MATERIAL: 316 Series Stainless Steel

SOLENOID CASE: 304 Series Stainless Steel

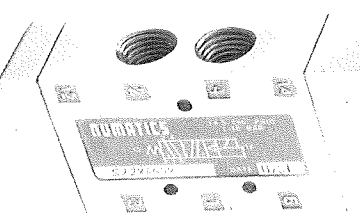
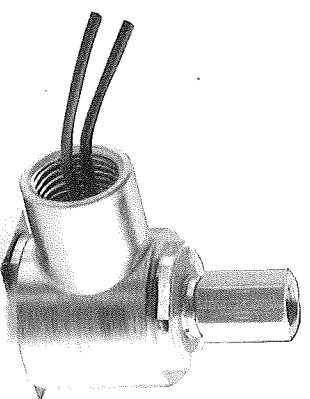
SERVICE: Valves can be used on the following properly filtered media:

Lubricated air, dry (oil free) air, vacuum, and non-corrosive, non-toxic, non-flammable dry gases. See Numatics' Engineering and Technical Data for a list of recommended lubricants and filtration requirements for unlubricated service.

FLOW CAPACITY: CV: 1.2

ELECTRICAL SPECIFICATIONS

SOLENOIDS: All solenoids are continuous duty rated. Standard A.C. voltage is 120/60. Standard D.C. voltage is 24 VDC. Other voltages available upon request, consult factory.



S22XA4520 120/60

HAZARDOUS LOCATION				
Inrush Current (amps)	Holding Current (amps)	D.C. Watts, Inrush and Holding All Voltages (max)	Time to Energize (seconds)	Time to De-energize (seconds)
120/60 .136	.096	5.6	.010	.019
24 VDC .032	.032	7.2	.012	.020

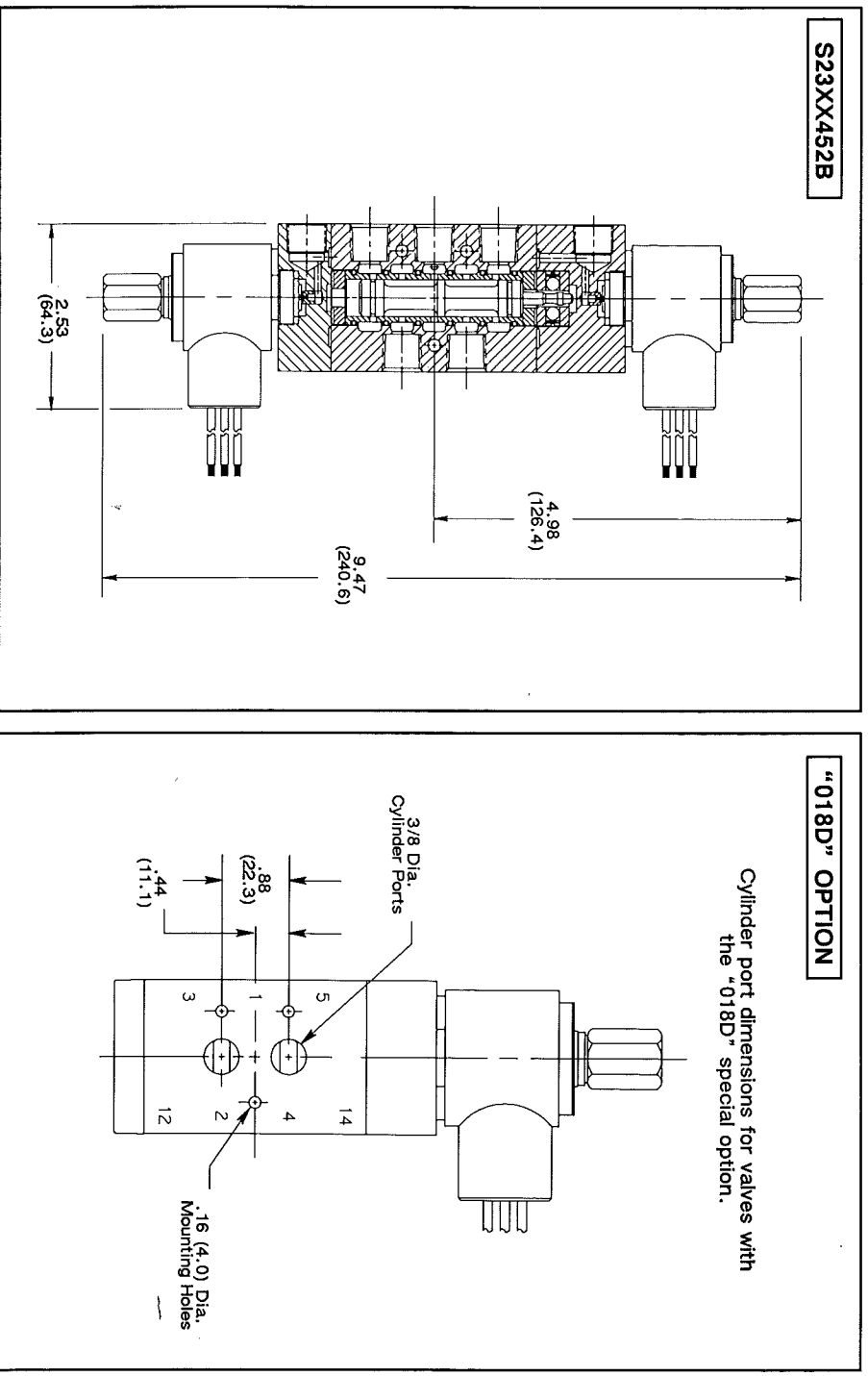
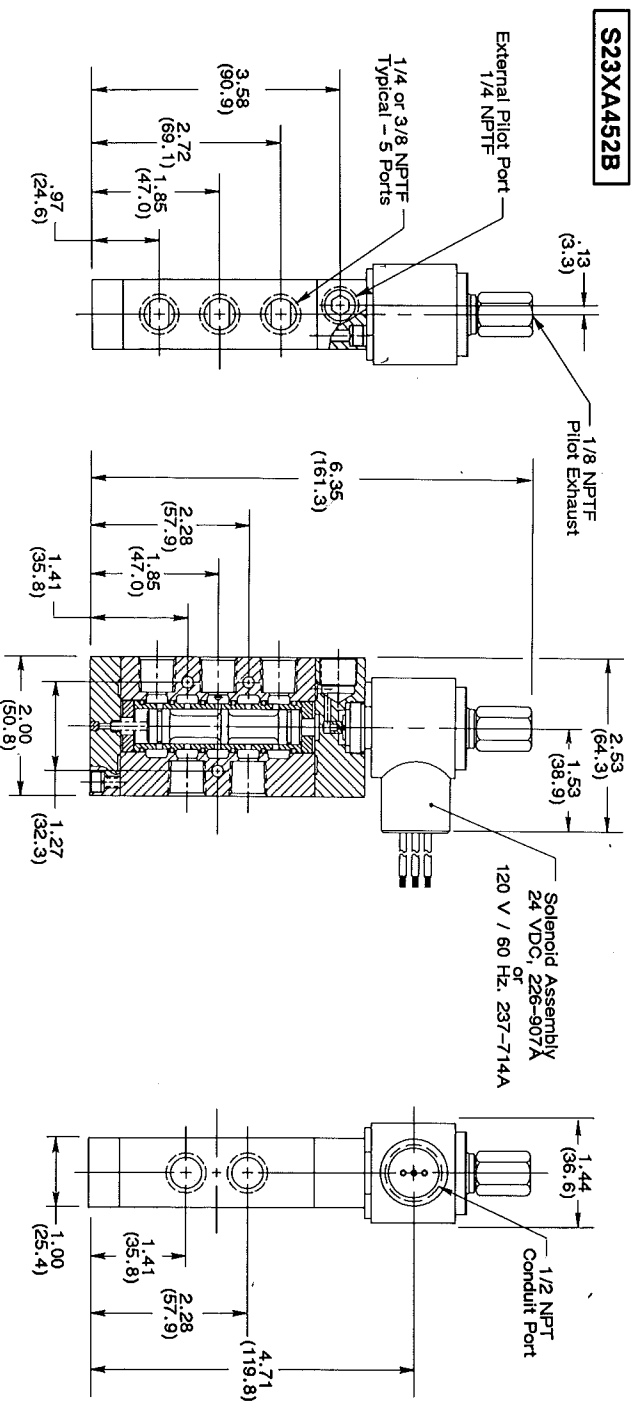
INTRINSICALLY SAFE				
Inrush Current (amps)	Holding Current (amps)	D.C. Watts, Inrush and Holding All Voltages (max)	Time to Energize (seconds)	Time to De-energize (seconds)
24 VDC .075	.075	1.8	.020	.030

MODEL SELECTION CHART				
VALVE TYPE	MODEL NUMBER		A.N.S.I. SYMBOL	WIRING OPTION
	1/4 NPTF	3/8 NPTF		
Hazardous Location Single Solenoid Pilot, 2-Position, Spring Return	S22XA452	S23XA452		Add one letter to the model number and specify volts and hertz. * O = Standard A.C. Hardwired with 24" Solenoid Leads B = Standard D.C. Hardwired with 24" Solenoid Leads - Not available for Intrinsically Safe
Hazardous Location Double Solenoid Pilot, 2-Position, Detented	S22XX452	S23XX452		SPECIAL OPTION Add to the model number. 011B = Flush Locking Override In The Pilot Adapter 018D = Side Cylinder Ports in the Body. To Adapt To Actuator Adapters or Cylinders
Intrinsically Safe Single Solenoid Pilot, 2-Position, Spring Return	S221A452	S231A452		
Intrinsically Safe Double Solenoid Pilot, 2-Position, Detented	S221I452	S231I452		

Top Dimensions = Inches
Bottom Dimensions
(In Parentheses) = Millimeters

SOLENOID PILOT ACTUATED DIMENSIONS

numatics®
STAINLESS STEEL S2X
HAZARDOUS LOCATION



EXTERNAL PILOT SUPPLY

To convert any valve to external pilot supply, remove the adapter from the valve body, rotate the gasket to block the internal supply, and replace the adapter in the same position. Remove the 1/4 NPTF plug from the adapter and supply external pilot pressure to this port.
On double solenoid-pilot valves, both ends must be converted.
External pilot supply must be used if pressure is supplied to any port except No. 1

* This spool and Sleeve assembly is sold as a precision matched set only. Spools are not interchangeable.